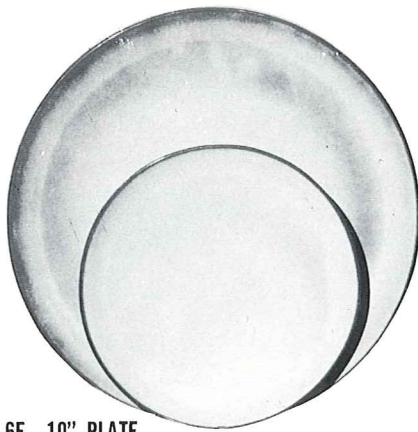


*4K—BUTTER DISH



6F—10" PLATE

6G—7" PLATE



*6B—SUGAR WITH LID



*6A—9 OZ. CREAMER



*6V—2½ QT. BAKER
6V/W BAKER & WARMER SET



* *6C—CUP

6E—5" WELLED SAUCER



*6H—SALT & PEPPER



*5LC—6 OZ. JUICE



*5L—12 OZ.
TUMBLER



*6VS—1½ QT. BAKER
6VS/W BAKER & WARMER SET



*6T—6 CUP TEAPOT



*81—1 QT. PITCHER



*80—2 QT. PITCHER



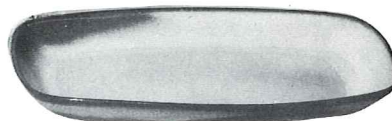
*6J—2 CUP TEAPOT



*6S—2 SPOUT GRAVY



*6U—18 OZ. BAKER FOR TWO
A COVERED CANDY DISH



5QS—13" STEAK PLATE (SHALLOW PLATTER)

*6P—11" STEAK PLATE

*5PS—9" TRAY



*BP—6 OZ. BEAN POT
OR CUSTARD

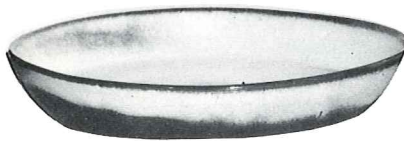


*XO—3 OZ.
SINGLE SERVING
BOWL

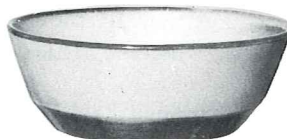


**6X—14 OZ. CHILI SOUP

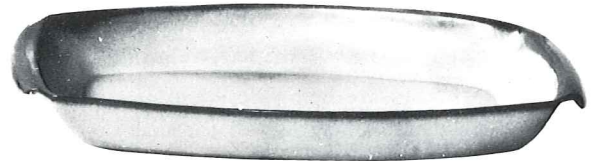
**6XS—10 OZ. FRUIT



*91—10" BAKING DISH

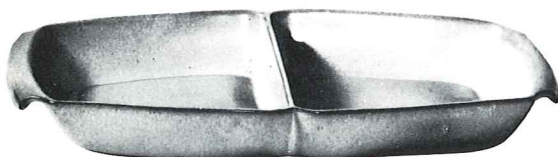


*6N—1 QT. BOWL

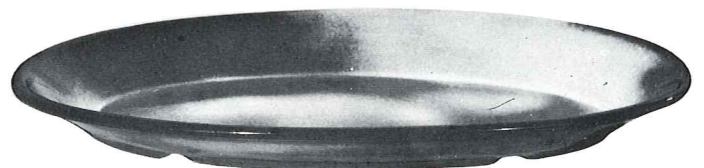


5P—17" DEEP PLATTER

*5Q—13" DEEP PLATTER



*5QD—13" DIVIDED BOWL



*TP—17" OVAL PLATTER

THIS PAGE AVAILABLE IN PRAIRIE GREEN, ROBIN EGG BLUE, AUTUMN YELLOW AND WHITE SAND EXCEPT WHERE NOTED

*AVAILABLE IN ALL COLORS **AVAILABLE IN BLACK & FLAME ALSO. — ADD 50% FOR FLAME

SIZES ARE APPROXIMATE AND MAY VARY SLIGHTLY.